

# State of Wyoming Corner Record

(In compliance with the *CORNER PERPETUATION AND FILING ACT*, Wyoming Statutes, 1997 Section 33-29-140 et. seq., and the Rules and Regulations of the Board of Professional Engineers and Professional Land Surveyors)

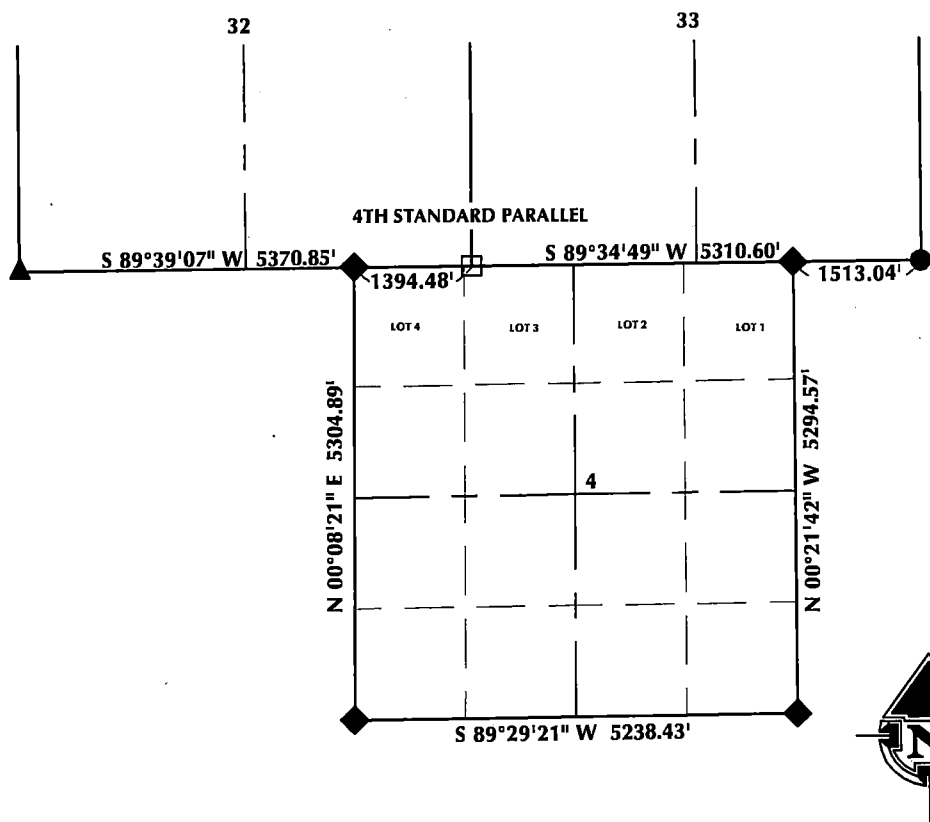
Reverse side of this form may be used if more space is needed.

Record of original survey and citation of source of historical information (if corner is lost or obliterated). Description of corner monumentation evidence found and/or monument and accessories established to perpetuate the location of this corner. Sketch of relative location of monument, accessories, and reference points with course and distance to adjacent corner(s) (if determined in this survey). Method and rationale for reestablishment of lost or obliterated corner.

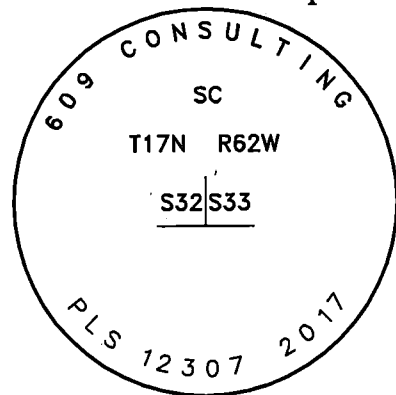
FOUND: Bent #5 rebar with no cap 8" below County Road 227.

SET: Removed bent #5 rebar. Set 2 1/2" aluminum cap, stamped PLS 12703, on #5 rebar 8" below County Road 227.

## Monument Location



## Monument Inscription



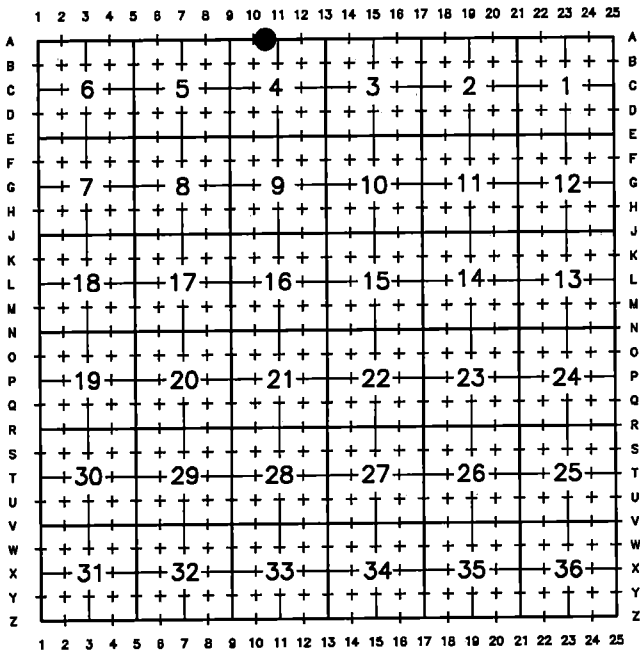
**NOTES:**

1. ▲ INDICATES FOUND BRASS CAP
2. ● INDICATES FOUND ALUMINUM CAP
3. ◆ INDICATES SET ALUMINUM CAP
4. ■ INDICATES FOUND STONE
5. □ INDICATES SECTION CORNER PER CORNER RECORD
6. BASIS OF BEARING DERIVED FROM WYOMING COORDINATE SYSTEM NAD83 EAST ZONE
7. ALL MEASURED DISTANCES ARE GRID
8. DRAWING NOT TO SCALE

Date of Field Work: 8/9/17

Office Reference: 17-53

## Cross Index Plat



Land Surveyor/Firm/Address

This corner record was prepared by me or under my direction and supervision.

609 Consulting, LLC  
1095 Saberton Avenue  
Sheridan, WY 82801  
 Telephone Number: 307-674-0609



RECP #: 715189  
 RECORDED 9/5/2017 AT 10:38 AM BK# 2557 PG# 635  
 Debra K. Lee, CLERK OF LARAMIE COUNTY, WY PAGE 1 OF 1

Corner Name: Southeast Corner Section 32, T17N, R62W, 6th P.M. County: Laramie Wyoming

T16N R62W  
 Cross-Index No.: A-10-11

SBRPEPLS/PLSW: March 1994; PLSW January 1998